

Inox-Maxi SSB DHW Buffer Cylinder



- Stainless steel DHW buffer cylinder
- Extremely low standby heat losses

- Large connections
- Large inspection hatch

- Up to 3000 litres storage capacity

Inox Maxi SSB DHW Stainless Steel Buffer Cylinder for medium to large applications

Durable construction providing peace of mind

Constructed from 316L grade stainless steel providing excellent resistance to attack from corrosion.

Extremely low standby heat losses

Increasing system efficiency due to the extremely low standby heat loss as low as 2.3 kW/24hr.

Durability

The Inox-maxi SSB DHW buffer cylinders are manufactured from grade 316L stainless steel and in compliance with ErP Eco-Design requirements for Energy Related Products.

External control

The stored DHW temperature can be monitored and controlled externally.



A range of sizes

Eight models providing storage capacities ranging from 500 to 3000 litres.

Cost effective

Due to the stainless steel construction of the unit, the cost of the yearly maintenance of the unit is greatly reduced by not requiring sacrificial anodes.

Removable jacket

800L models and above are supplied with removable jackets and insulation.

Immersion heater option

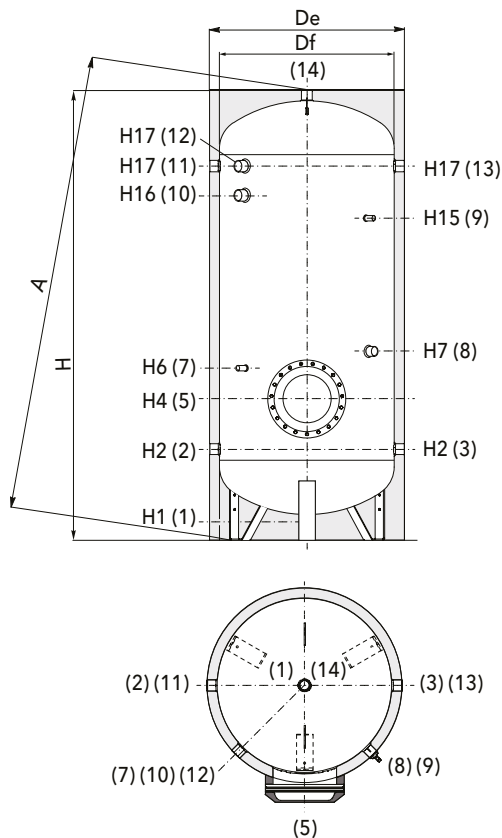
ELCO offers the option of adding an immersion heater. For more information please see the table on the right.

Inspection hatch

Easy access to the base of the cylinder through the inspection hatch for yearly maintenance.

Accessories

Matched optional/additional un-vented kits are available to assist with installation.



Item No.	Description
1	Drain
2	Domestic cold water inlet
3	Flow to external heat exchanger
5	Blind inspection flange
7	1/2" BSP tapping for instrumentation
8	Re-circulation
9	1/2" BSP tapping for instrumentation
10	Connection for immersion heater
11	Alternative return from external heat source
12	T&P valve
13	Return from external heat source
14	Domestic hot water outlet

Technical data – Inox-Maxi SSB DHW Buffer Cylinder

Inox-Maxi SSB		500	800	1000	1300	1500	2000	2500	3000	
Water	Nominal storage capacity	litres	501	759	901	1272	1398	2018	2321	2927
	Maximum operating pressure	bar	6	6	6	6	6	6	6	6
	Maximum operating temperature	°C	95	95	95	95	95	95	95	95
Energy	Energy class		C	C	C	C	C	C	NA	NA
	Standby heat loss stored temperature 65°C	kw/24hr	2.3	2.7	2.8	3.5	3.8	4.3	-	-
Electrical	Optional electric elements	kw/phase	1.5 up to 3kW/1 Phase or 4 up to 6kW/3 Phase		1.5 up to 3kW/1 Phase or 4 up to 12kW/3 Phase					
Misc.	Weight empty/full	kg	90/597	134/893	154/1055	180/1452	200/1598	340/2358	409/2730	482/3409

Dimensions

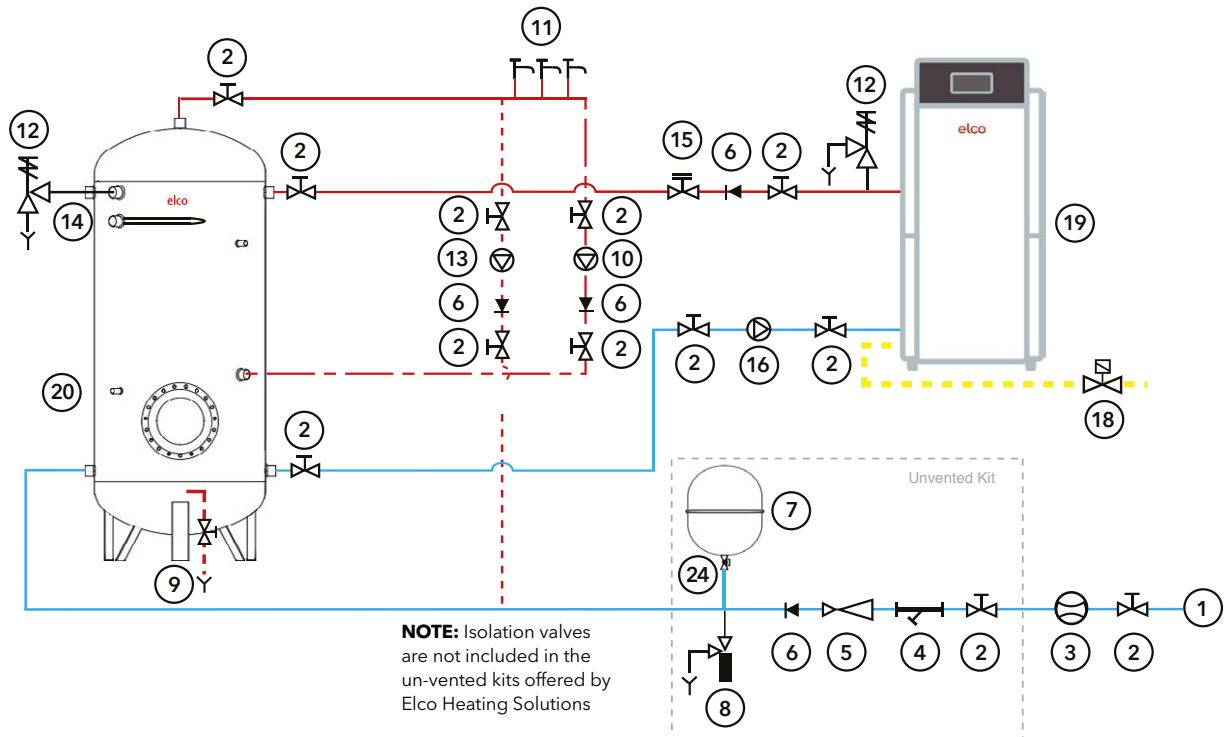
Inox-Maxi SSB	Df	De	H	A	H1	H2	H4	H6	H7	H15	H16	H17	5
	(mm)												
500	650	750	1805	1898	85	290	315	485	675	1295	1244	1400	Øe 180
800	790	1010	1943	1993	113	428	483	623	863	1433	1382	1538	Øe 240
1000	800	1020	2192	2257	112	427	482	622	912	1682	1632	1787	Øe 240
1300	950	1170	2213	2255	118	433	488	628	918	1688	1638	1793	Øe 240
1500	1000	1220	2197	2245	112	447	502	642	982	1652	1602	1757	Øe 240
2000	1250	1470	2119	2205	134	529	574	714	1004	1524	1473	1629	Øe 240
2500	1250	1300	2299	2617	134	529	574	714	954	1794	1710	1879	Øe 240
3000	1250	1300	2799	3065	134	529	574	714	1014	2294	2210	2369	Øe 240

Connections

Inox-Maxi SSB	1	2, 3, 11, 13	7, 9,	8	10	12	14
	Gas F						
500	3/4"	1 1/4"	1/2"	1 1/4"	1 1/2"	2"	1 1/4"
800	3/4"	1 1/4"	1/2"	1 1/4"	1 1/2"	2"	1 1/2"
1000	3/4"	1 1/2"	1/2"	1 1/4"	2"	2"	1 1/2"
1300	1"	1 1/2"	1/2"	1 1/4"	2"	2"	2"
1500	1"	1 1/2"	1/2"	1 1/4"	2"	2"	2"
2000	1"	2"	1/2"	1 1/4"	2"	2"	2"
2500	1"	2"	1/2"	1 1/4"	2"	2"	2"
3000	1"	2"	1/2"	1 1/4"	2"	2"	2"

Example of Hydraulic Scheme – Inox Maxi SSB DHW Buffer Cylinder

Typical unvented water heater and buffer vessel schematic



- | | | |
|----------------------------|---|-----------------------------|
| 1. Cold water supply | 9. Drain | 18. Gas shut-off valve |
| 2. Isolation valve | 10. DHW secondary re-circulation pump | 19. TRIGON® XL Water Heater |
| 3. Water meter | 11. Hot water outlets | 20. SSB buffer vessel |
| 4. Strainer | 12. Temperature and pressure relief valve | 24. Lockshield valve |
| 5. Pressure limiting valve | 13. De-stratification pump | |
| 6. Non-return valve | 14. Immersion heater | |
| 7. Expansion vessel | 15. Double regulating valve | |
| 8. Expansion relief valve | 16. DHW Primary Circulation Pump | |

For more schematics please refer to the Installation and Operation manual or contact ELCO Heating Solutions

These illustrations are designed to provide general guidance on the hydraulic scheme and should not be considered as an installation drawing.

Clearances

