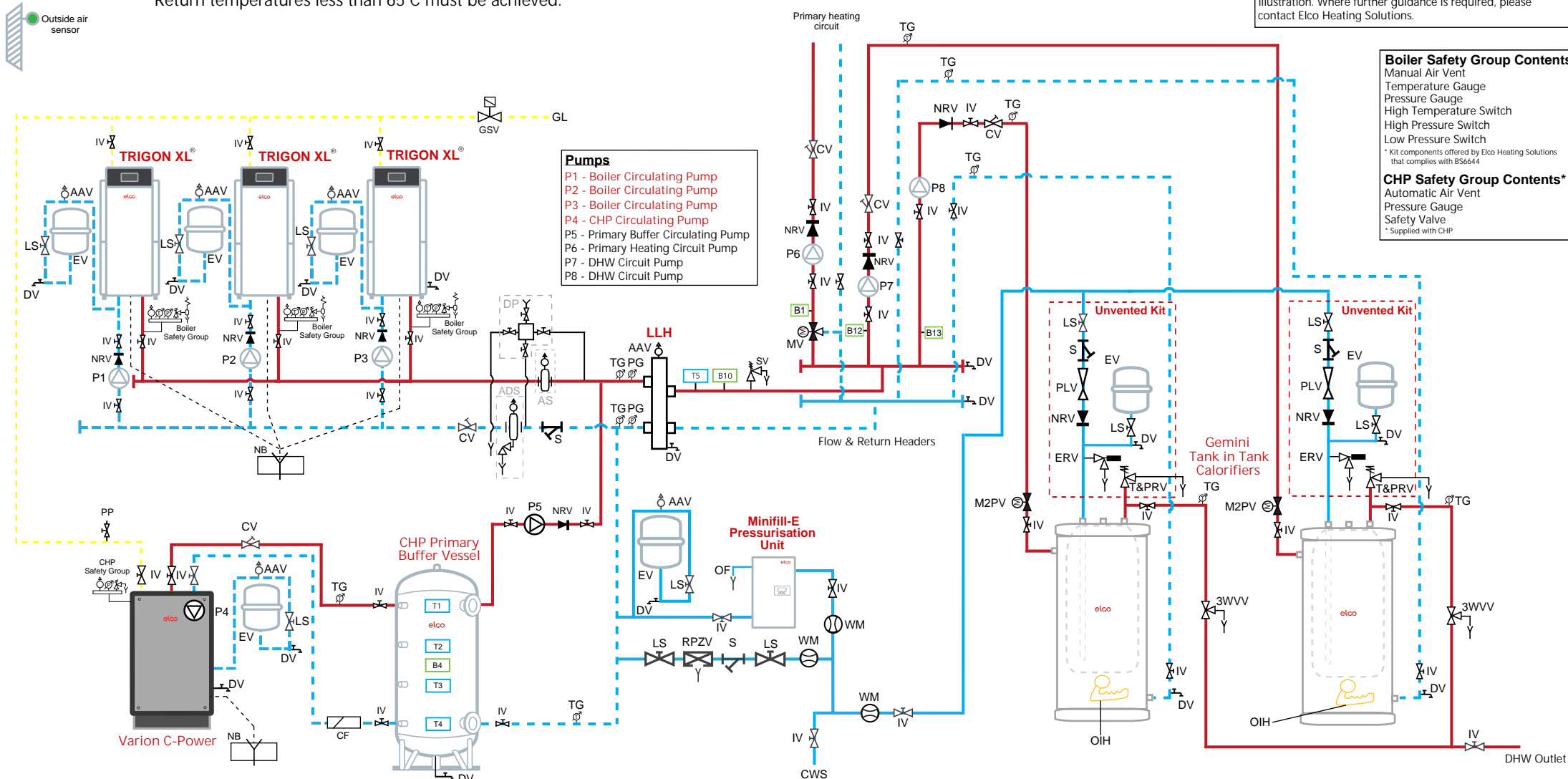


Please Note:
 High system return temperatures lead to forced shutdowns of the CHP.
 Return temperatures less than 65°C must be achieved.

Please Note:
 This illustration is designed to provide general guidance on the hydraulic scheme and should not be considered as a design drawing. Control of individual components is flexible and for this reason details are included on this illustration. Where further guidance is required, please contact Elco Heating Solutions.



- Pumps**
- P1 - Boiler Circulating Pump
 - P2 - Boiler Circulating Pump
 - P3 - Boiler Circulating Pump
 - P4 - CHP Circulating Pump
 - P5 - Primary Buffer Circulating Pump
 - P6 - Primary Heating Circuit Pump
 - P7 - DHW Circuit Pump
 - P8 - DHW Circuit Pump

- Boiler Safety Group Contents***
- Manual Air Vent
 - Temperature Gauge
 - Pressure Gauge
 - High Temperature Switch
 - High Pressure Switch
 - Low Pressure Switch
- * Kit components offered by Elco Heating Solutions that complies with BS6644
- CHP Safety Group Contents***
- Automatic Air Vent
 - Pressure Gauge
 - Safety Valve
- * Supplied with CHP

Legend

3WVW - 3 Way Vent Valve	CF - Combination Filter	IV - Isolation Valve
AAV - Automatic Air Vent	CV - Commission Valve	LLH - Low Loss Header*
ADS - Air/Dirt Separator	CWS - Cold Water Supply	LS - Lockshield Valve
AS - Air Separator	DHW - Domestic Hot Water	M2PV - Motorised 2 Port Valve
B1 - Heating Circuit 1 Temperature Sensor	DP - Dosing Pot	MV - Mixing Valve (Motorized)
B3 - Calorifier Temperature Stat	DV - Drain Valve	NB - Neutralisation Box**
B4 - Boiler Buffer Vessel Temperature Sensor	ERV - Expansion Relief Valve	NRV - Non-Return Valve
B10 - Boiler Common Flow Temperature Sensor	EV - Expansion Vessel	OF - Overflow Pipe
B12 - DHW Circuit 1 Temperature Sensor	GL - Gas Line	OIH - Optional Immersion Heater
B13 - DHW Circuit 2 Temperature Sensor	GSV - Gas Shut-off Valve	PG - Pressure Gauge
		PLV - Pressure Limiting Valve
		PP - Purge Point
		RP - Recirculation Pump
		RPZV - Reduced Pressure Zone Valve***
		S - Strainer
		SV - Safety Valve****
		T&PRV - Temperature & Pressure Relief Valve
		T1-T5 - CHP Temperature Sensors
		TG - Temperature Gauge
		WM - Water Meter

* Size dependent on the ΔT and kW output of the boilers
 ** Check with local authority if required
 *** Above 70kW input is mandatory
 **** Must comply with BS6644 (Page 13)

Elco Heating Solutions - February 2020 Schematic

3 Trigon XL high efficient, pre-mix condensing boilers and 1 Varion CHP with 1 Buffer Vessel providing primary water via a Low Loss Header. Serving 1 mixed temperature primary heating circuit and 2 domestic hot water circuits via Gemini tank in tank Calorifiers with optional unvented kits and immersion heater.

Elco Heating Solutions
 3 Juniper West, Fenton Way
 Southfields Business Park
 Basildon, Essex
 SS15 6SJ
 Tel: 0345 646 0442
 www.elco.co.uk

Page 1 of 1
 Drawing Number - 02/2021