

Waterfront City Apartments

Budapest, Hungary

Waterfront City's unique atmosphere combines the architectural values and atmosphere of the past with the most innovative solutions of today.

The unique building of the former Óbuda Distillery and the old factory chimney have been given fresh features, highlighting their distinctive appearance. The former factory building has been renovated and converted into commercial, catering and office space.

The green-roofed residential buildings and the vast parkland area offer a welcoming and pleasant environment for residents, with an added emphasis on protecting the environment for future generations.

The challenge

The biggest challenge during the whole project was to install the most optimal boilers within the narrow dimensions of the plant rooms. As it was a large project, the problem arose that not enough space was provided for the boiler houses. A lot of space was taken up by parking and other rooms beneath the buildings.

Comment

Dominik Szenderák, project leader, said: "Based on my personal experience, I was fortunate to have had the opportunity to visit all the boiler houses, and it was a pleasure to see how much could be achieved within so little space. Talking to the contractors, I was pleased to hear that they were also impressed with how compact the appliances were and how this made the construction process much easier."

Featured products:

THISION® L PLUS



THISION® L ECO



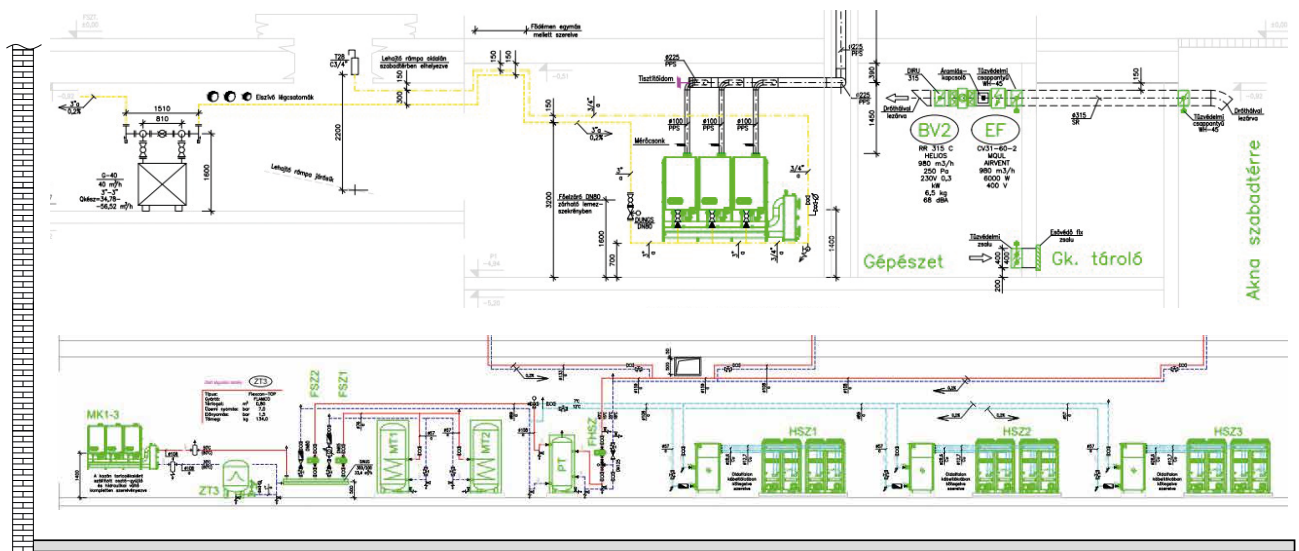
Designed to deliver.

The THISION® L PLUS incorporates the latest high-performance technology and carefully engineered components to provide maximum efficiency for the lifetime of the boiler. This ensures the total cost of ownership is greatly reduced, offering an ecological solution for a range of commercial applications.

- ▶ Most powerful wall hung boiler
- ▶ Compact dimensions
- ▶ Easy service
- ▶ Low noise level
- ▶ Integrated non-return valve
- ▶ Full external control
- ▶ Robust stainless steel heat exchanger
- ▶ Extensive cascade control options
- ▶ Highly efficient combustion



System schematic



The plant scheme

- ▶ 3 x THISION® L ECO 120
- ▶ 3 x THISION® L PLUS 140

The ELCO solution

The buildings were equipped with the older THISION® L ECO and the newer version THISION® L PLUS. Their small enclosure dimensions also aided installation while saving space.

Benefits

THISION® L PLUS 140

16.8
litres

For single boiler heat exchanger

26
mg/kWh

NOx level (annual emission EN15502)

110.7%

Annual efficiency (NNG 40/30°C)

THISION® L ECO 120

15
litres

For single boiler heat exchanger

36
mg/kWh

NOx level (annual emission EN15502)

111.9%

Annual efficiency (NNG 40/30°C)